



MONTHLY MEMBERSHIP PROGRESS REPORT

District 5 NE

Results as of: 6/30/2015

GMT: Judy Hankom

LOCATION NORTH DAKOTA

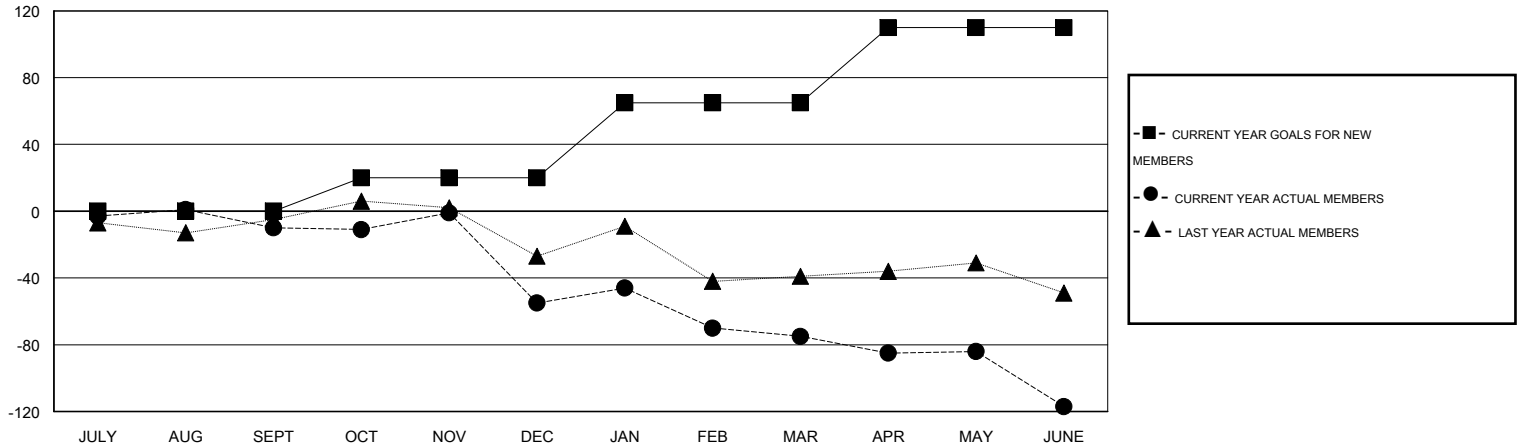
GMT CA 1

Clubs					Members				
RESULTS FOR 2014-2015					RESULTS FOR 2014-2015				
QUARTER	NEW CLUB GOAL	NEW CLUBS	DROPPED CLUBS	NET GAIN/LOSS	QUARTER	NEW MEMBER GOAL	CHARTER AND NEW MEMBERS ADDED	DROPPED MEMBERS	NET GAIN/LOSS
JULY/AUG/SEPT	0	0	1	-1	JULY/AUG/SEPT	0	20	30	-10
OCT/NOV/DEC	0	0	1	-1	OCT/NOV/DEC	20	26	71	-45
JAN/FEB/MAR	1	0	0	0	JAN/FEB/MAR	45	63	83	-20
APR/MAY/JUNE	1	0	1	-1	APR/MAY/JUNE	45	18	60	-42

GOALS AND ACTUAL NEW CLUBS CUMULATIVE



GOALS AND ACTUAL MEMBERS CUMULATIVE



DROPPED CLUBS: 3	35 CLUBS OF 57 ADDED 1 OR MORE NEW MEMBERS	<u>GENDER DISTRIBUTION</u>	
<u>DROPPED MEMBERS</u>		MALE	1,053 (76.19%)
DECEASED	15	FEMALE	329 (23.81%)
CLUB CANCELLED	40	FAMILY UNIT MEMBERS 152 HEAD OF HOUSEHOLD 76 NON-HEAD OF HOUSEHOLD 76	
OTHER	189		
TOTAL	244		
CLICK HERE FOR HEALTH ASSESSMENT DATA			